



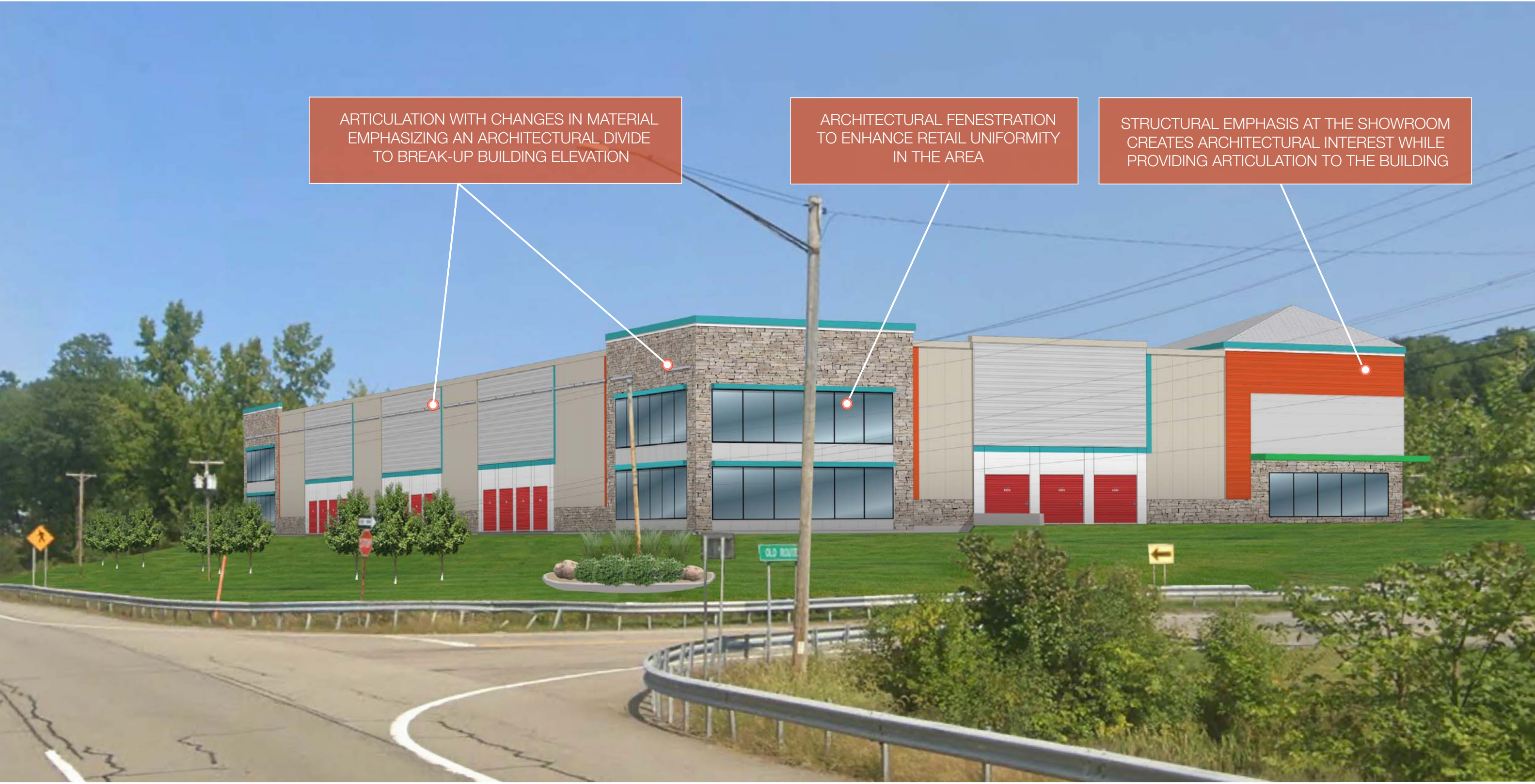
2727 N. CENTRAL AVENUE  
PHOENIX, ARIZONA 85004  
P: 602.263.6841



Preliminary Proposal

**SHEET 01**

©2024 ALL RIGHTS RESERVED 2024-02-15



ARTICULATION WITH CHANGES IN MATERIAL EMPHASIZING AN ARCHITECTURAL DIVIDE TO BREAK-UP BUILDING ELEVATION

ARCHITECTURAL FENESTRATION TO ENHANCE RETAIL UNIFORMITY IN THE AREA

STRUCTURAL EMPHASIS AT THE SHOWROOM CREATES ARCHITECTURAL INTEREST WHILE PROVIDING ARTICULATION TO THE BUILDING



2727 N. CENTRAL AVENUE  
PHOENIX, ARIZONA 85004  
P: 602.263.6841



Southwest Elevation  
Composite Rendering

**SHEET 02**

©2024 ALL RIGHTS RESERVED 2024-02-15



PROJECTIONS OVER THE STORAGE:  
LOAD/UNLOAD AREA AND THE  
CUSTOMER ENTRANCE AREA CREATES  
ARCHITECTURAL INTEREST AND  
PROTECTION FROM THE ELEMENTS

VERTICAL OFFSETS CREATE A PATTERN OF  
LIGHT, SHADOW, AND LYRICAL ARTICULATION

IMP EXCEEDS SUSTAINABLE LEED  
STANDARDS BY PROVIDING  
SUPERIOR R-VALUE INSULATION  
FOR GREATER THERMAL  
EFFICIENCY



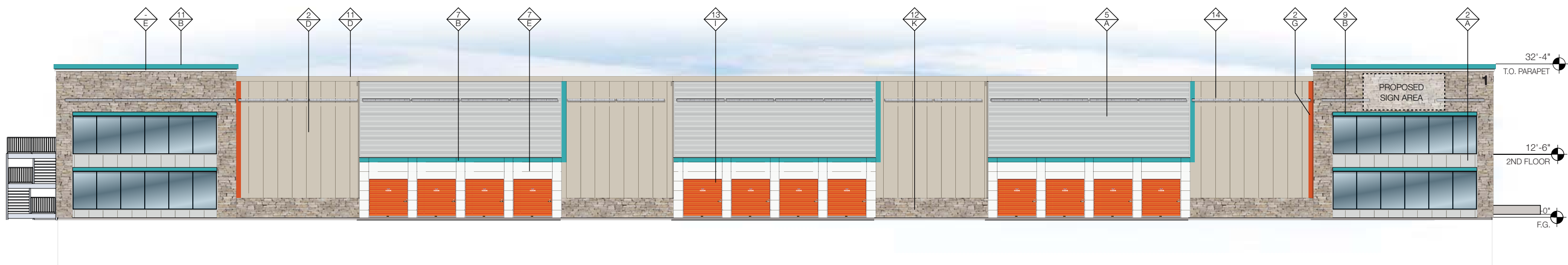
2727 N. CENTRAL AVENUE  
PHOENIX, ARIZONA 85004  
P: 602.263.6841



Southeast Elevation  
Composite Rendering

SHEET 03

©2024 ALL RIGHTS RESERVED 2024-02-15



**GENERAL NOTES:**

**D1** - THE PROPOSED IMP USES FULL-WIDTH PANELS. **DO NOT CUT IMP** DUE TO PAINT VARIATIONS. CONTACT THE DESIGNER AT A&M ASSOCIATES TO FIND A SOLUTION. P: 602.623.6841

**D2** - THE PROPOSED PROJECT CONSISTS OF **36" WIDE IMP**. DEVIATING FROM THIS SIZE PANEL WILL ALTER THE LYRICAL FIN DESIGN. PLEASE CONTACT THE DESIGNER AT A&M ASSOCIATES SO THE PLAN DRAWINGS CAN BE UPDATED. P: 602.623.6841

COLORS	
A	SILVERSMITH
B	SW 6767 AQUARIUM
C	DARK OAK
D	SANDSTONE
E	REGAL WHITE
F	SW 6451 NURTURE GREEN
G	SW 6884 OBSTINATE ORANGE
H	MBCI U-HAUL GREEN
I	SIERRA SUNSET
J	BRUSH FINISHED TILT-UP CONCRETE
K	STACKED STONE
L	U-HAUL PROMO GREEN

MATERIALS	
1	BRUSH FINISHED TILT-UP WALL CONCRETE
2	STUCCO EMBOSSED VERTICAL IMP 36"W FWDS
3	CUSTOMER ENTRANCE PROJECTION
4	HORIZONTAL PANELS DS58 24"W 3.5" REVEAL
5	HORIZONTAL PANEL IMP DS59 12"W
6	HORIZONTAL PANEL IMP DS60 12"W
7	FWGX HORIZONTAL IMP 24"W 1.0" REVEAL
8	9"D LYRICAL ARTICULATED DESIGN ELEMENT
9	ARCHITECTURAL DETAILS 9"H X 3"D
10	STORAGE: LOAD/UNLOAD PROJECTION
11	12" H TRIM
12	LOCALLY SOURCED STACKED STONE
13	ARCHITECTURAL DETAIL
14	SCUPPERS



**A&M ASSOCIATES, INC.**  
 2727 N. CENTRAL AVENUE  
 PHOENIX, ARIZONA 85004  
 P: 602.263.6841



Colors and Materials

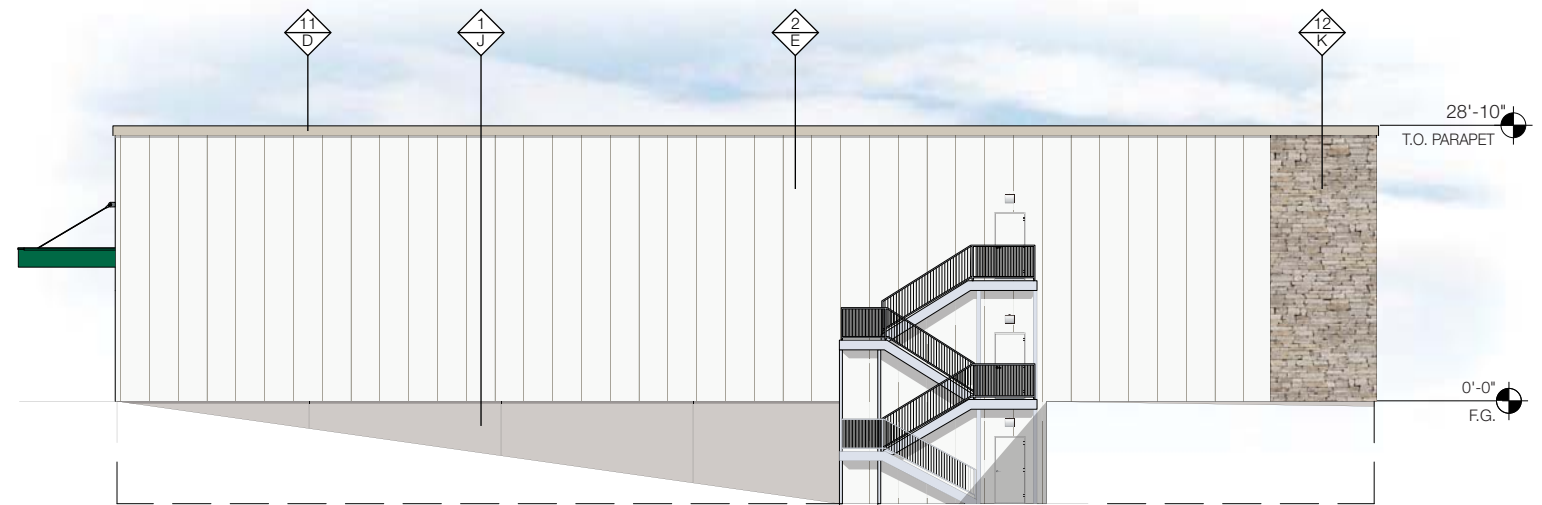
**SHEET 04**

©2024 ALL RIGHTS RESERVED 2024-02-15



**SOUTH ELEVATION - BLDG. A**

Scale: 1" = 20'



**NORTH ELEVATION - BLDG. A**

Scale: 1" = 20'

**GENERAL NOTES:**

**D1** - THE PROPOSED IMP USES FULL-WIDTH PANELS. **DO NOT CUT IMP** DUE TO PAINT VARIATIONS. CONTACT THE DESIGNER AT A&M ASSOCIATES TO FIND A SOLUTION. P: 602.623.6841

**D2** - THE PROPOSED PROJECT CONSISTS OF **36" WIDE IMP**. DEVIATING FROM THIS SIZE PANEL WILL ALTER THE LYRICAL FIN DESIGN. PLEASE CONTACT THE DESIGNER AT A&M ASSOCIATES SO THE PLAN DRAWINGS CAN BE UPDATED. P: 602.623.6841

**COLORS**

A	SILVERSMITH	G	SW 6884 OBSTINATE ORANGE
B	SW 6767 AQUARIUM	H	MBCI U-HAUL GREEN
C	DARK OAK	I	SIERRA SUNSET
D	SANDSTONE	J	BRUSH FINISHED TILT-UP CONCRETE
E	REGAL WHITE	K	STACKED STONE
F	SW 6451 NURTURE GREEN	L	U-HAUL PROMO GREEN

**MATERIALS**

1	BRUSH FINISHED TILT-UP WALL CONCRETE	8	9"D LYRICAL ARTICULATED DESIGN ELEMENT
2	STUCCO EMBOSSED VERTICAL IMP 36"W FWDS	9	ARCHITECTURAL DETAILS 9"H X 3"D
3	CUSTOMER ENTRANCE PROJECTION	10	STORAGE: LOAD/UNLOAD PROJECTION
4	HORIZONTAL PANELS DS58 24"W 3.5" REVEAL	11	12" H TRIM
5	HORIZONTAL PANEL IMP DS59 12"W	12	LOCALLY SOURCED STACKED STONE
6	HORIZONTAL PANEL IMP DS60 12"W	13	ARCHITECTURAL DETAIL
7	FWGX HORIZONTAL IMP 24"W 1.0" REVEAL	14	SCUPPERS



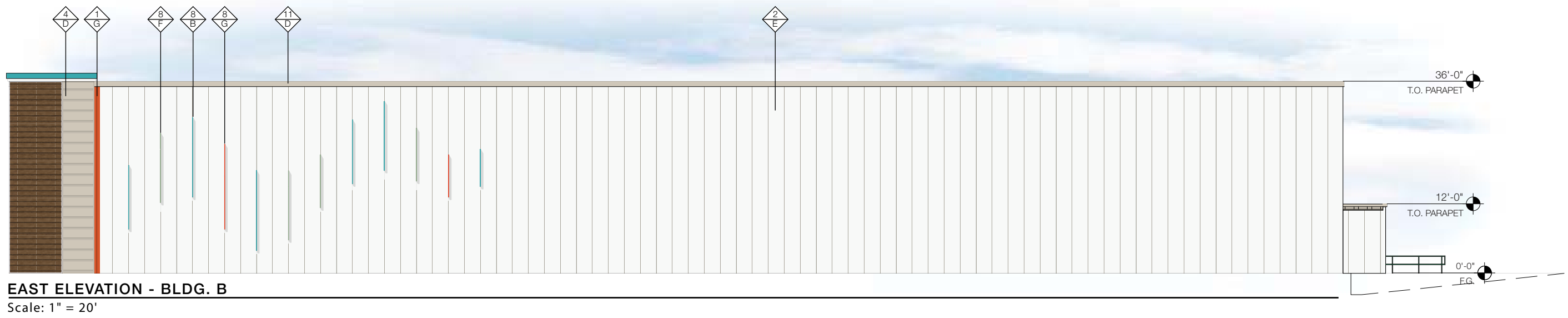
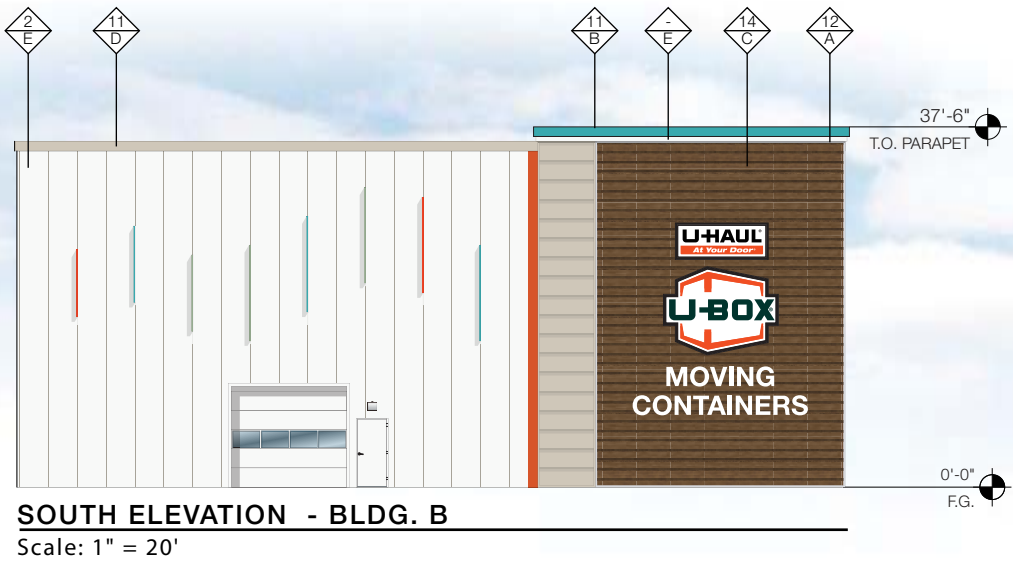
**A&M ASSOCIATES, INC.**  
2727 N. CENTRAL AVENUE  
PHOENIX, ARIZONA 85004  
P: 602.263.6841



**Colors and Materials**

**SHEET 05**

©2024 ALL RIGHTS RESERVED 2024-02-15



**GENERAL NOTES:**

**D1** - THE PROPOSED IMP USES FULL-WIDTH PANELS. **DO NOT CUT IMP** DUE TO PAINT VARIATIONS. CONTACT THE DESIGNER AT A&M ASSOCIATES TO FIND A SOLUTION. P: 602.623.6841

**D2** - THE PROPOSED PROJECT CONSISTS OF **36" WIDE IMP**. DEVIATING FROM THIS SIZE PANEL WILL ALTER THE LYRICAL FIN DESIGN. PLEASE CONTACT THE DESIGNER AT A&M ASSOCIATES SO THE PLAN DRAWINGS CAN BE UPDATED. P: 602.623.6841

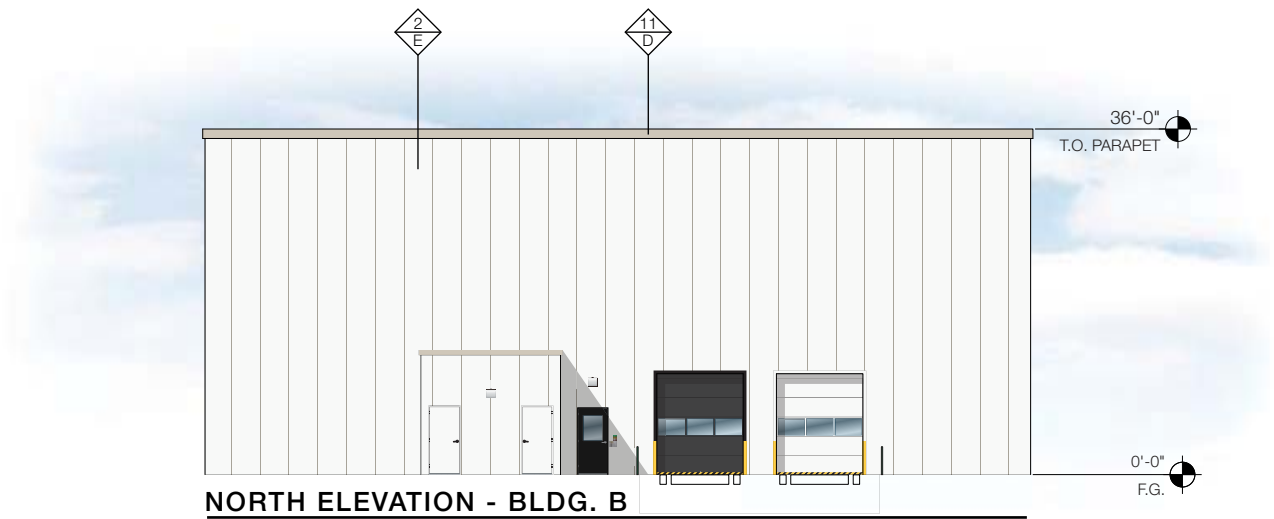
COLORS			
A	SILVERSMITH	G	SW 6884 OBSTINATE ORANGE
B	SW 6767 AQUARIUM	H	MBCI U-HAUL GREEN
C	DARK OAK	I	SIERRA SUNSET
D	SANDSTONE	J	BRUSH FINISHED TILT-UP CONCRETE
E	REGAL WHITE	K	STACKED STONE
F	SW 6451 NURTURE GREEN	L	U-HAUL PROMO GREEN

MATERIALS			
1	BRUSH FINISHED TILT-UP WALL CONCRETE	8	9"D LYRICAL ARTICULATED DESIGN ELEMENT
2	STUCCO EMBOSSED VERTICAL IMP 36"W FWDS	9	ARCHITECTURAL DETAILS 9"H X 3"D
3	CUSTOMER ENTRANCE PROJECTION	10	STORAGE: LOAD/UNLOAD PROJECTION
4	HORIZONTAL PANELS DS58 24"W 3.5" REVEAL	11	12" H TRIM
5	HORIZONTAL PANEL IMP DS59 12"W	12	2" SILVERSMITH TRIM ON ALL SIDES
6	HORIZONTAL PANEL IMP DS60 12"W	13	ARCHITECTURAL DETAIL
7	FWGX HORIZONTAL IMP 24"W 1.0" REVEAL	14	HORIZONTAL PANELS DS58 24"W 1.25" REVEAL

**a&m**  
**A&M ASSOCIATES, INC.**  
2727 N. CENTRAL AVENUE  
PHOENIX, ARIZONA 85004  
P: 602.263.6841

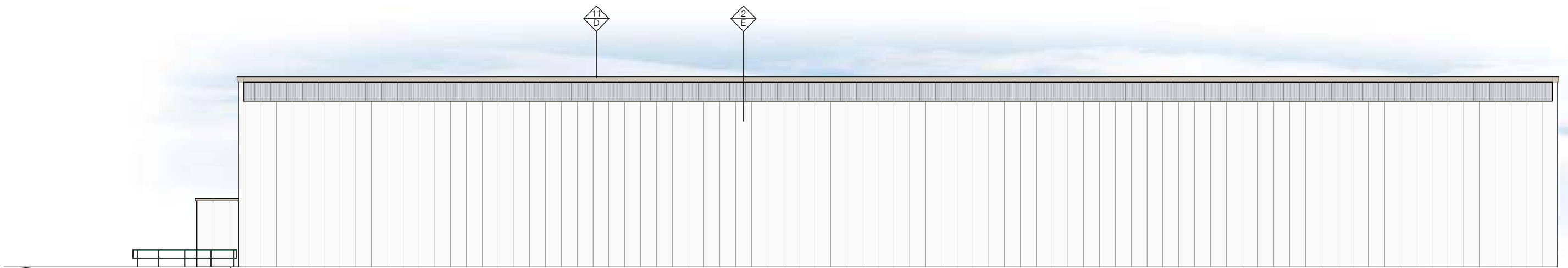
**U-HAUL**  
of Wappinger Falls  
Fishkill, NY  
(797074)

**Colors and Materials**  
**SHEET 06**



**NORTH ELEVATION - BLDG. B**

Scale: 1" = 20'



**WEST ELEVATION - BLDG. B**

Scale: 1" = 20'

**GENERAL NOTES:**

**D1** - THE PROPOSED IMP USES FULL-WIDTH PANELS. **DO NOT CUT IMP** DUE TO PAINT VARIATIONS. CONTACT THE DESIGNER AT A&M ASSOCIATES TO FIND A SOLUTION. P: 602.623.6841

**D2** - THE PROPOSED PROJECT CONSISTS OF **36" WIDE IMP**. DEVIATING FROM THIS SIZE PANEL WILL ALTER THE LYRICAL FIN DESIGN. PLEASE CONTACT THE DESIGNER AT A&M ASSOCIATES SO THE PLAN DRAWINGS CAN BE UPDATED. P: 602.623.6841

COLORS	
A	SILVERSMITH
B	SW 6767 AQUARIUM
C	DARK OAK
D	SANDSTONE
E	REGAL WHITE
F	SW 6451 NURTURE GREEN
G	SW 6884 OBSTINATE ORANGE
H	MBCI U-HAUL GREEN
I	SIERRA SUNSET
J	BRUSH FINISHED TILT-UP CONCRETE
K	STACKED STONE
L	U-HAUL PROMO GREEN

MATERIALS			
1	BRUSH FINISHED TILT-UP WALL CONCRETE	8	9"D LYRICAL ARTICULATED DESIGN ELEMENT
2	STUCCO EMBOSSED VERTICAL IMP 36"W FWDS	9	ARCHITECTURAL DETAILS 9"H X 3"D
3	CUSTOMER ENTRANCE PROJECTION	10	STORAGE: LOAD/UNLOAD PROJECTION
4	HORIZONTAL PANELS DS58 24"W 3.5" REVEAL	11	12" H TRIM
5	HORIZONTAL PANEL IMP DS59 12"W	12	2" SILVERSMITH TRIM ON ALL SIDES
6	HORIZONTAL PANEL IMP DS60 12"W	13	ARCHITECTURAL DETAIL
7	FWGX HORIZONTAL IMP 24"W 1.0" REVEAL	14	HORIZONTAL PANELS DS58 24"W 1.25" REVEAL



2727 N. CENTRAL AVENUE  
PHOENIX, ARIZONA 85004  
P: 602.263.6841



Colors and Materials

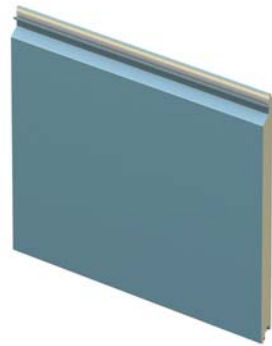
**SHEET 07**

©2024 ALL RIGHTS RESERVED 2024-02-15



## Formwall Dimension Series IMP Stucco Embossed (Or Equivalent)

Offers a modern, monolithic appearance to the building facade. Integrates easily with our windows and louver systems to provide a complete high performing building envelope system.



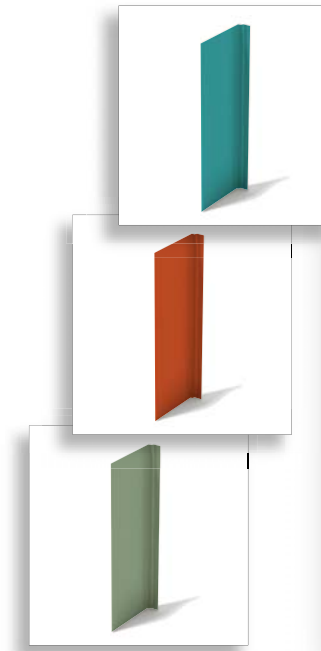
**DS58  
Horizontal**  
(Or Equivalent)



**DS59  
Horizontal**  
(Or Equivalent)



**DS60  
Horizontal**  
(Or Equivalent)



## 9"D Lyrical Articulated Design Element



**Locally Sourced  
Stacked Stone**



**Brush Finished**  
TILT-UP CONCRETE WALL



**Faux Wood Panels**  
Dark Oak



**FWGX  
Horizontal**  
(Or Equivalent)



2727 N. CENTRAL AVENUE  
PHOENIX, ARIZONA 85004  
P: 602.263.6841



Material Board

**SHEET 08**

©2024 ALL RIGHTS RESERVED 2024-02-15