



NCARB 84690  
AIA 3864069584  
NJ AI 15475  
NY 039330  
PA RA407639  
CT 13585  
DE S5-0008497  
MA 951751  
MD 18745  
DC AEC103027

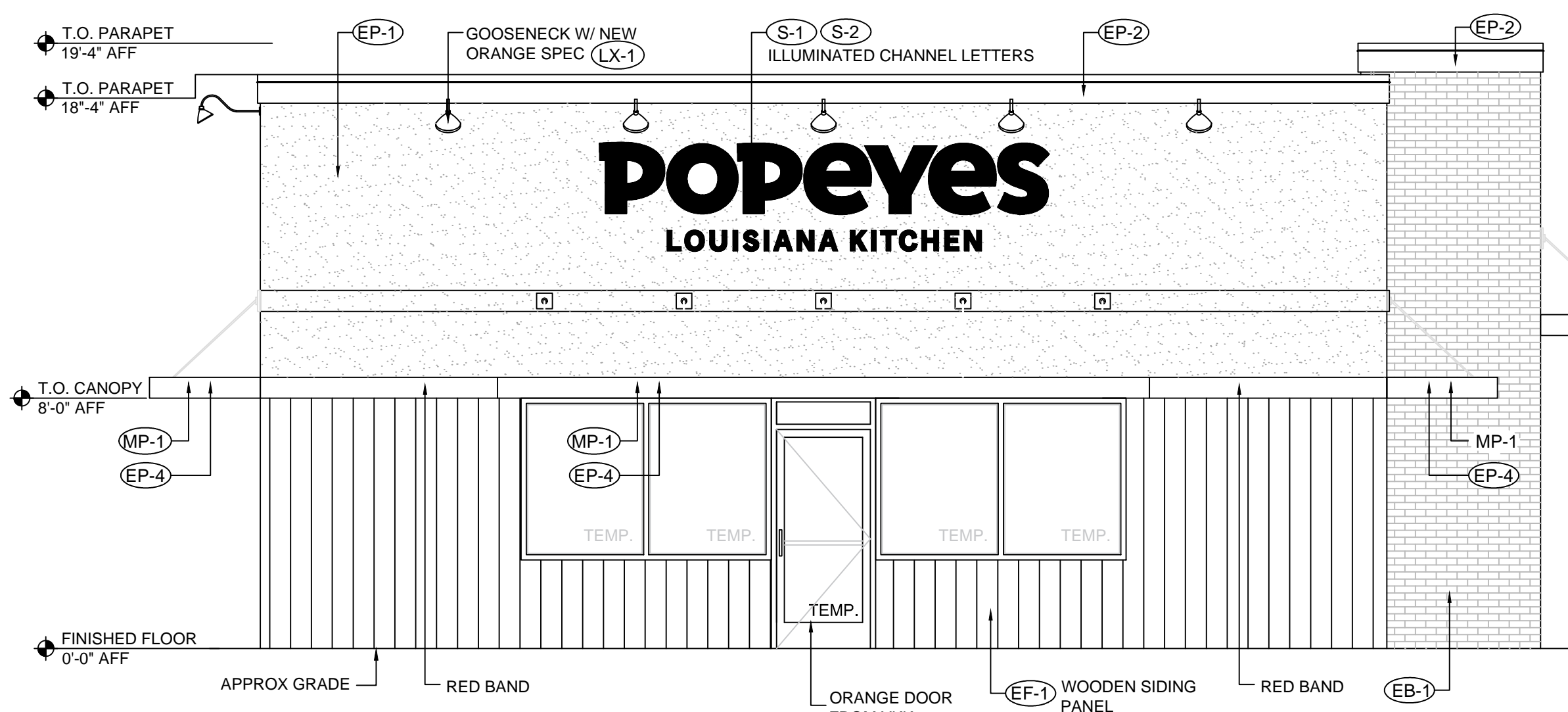
PROFESSIONAL OF RECORD  
PRACTICING AS AN INDIVIDUAL

PROPOSED POPEYES SITE  
1490 ROUTE 9 SOUTH  
WAPPINGERS FALLS NY  
WAPPINGERS FALLS SHOPPING CENTER  
PROPOSED ELEVATIONS

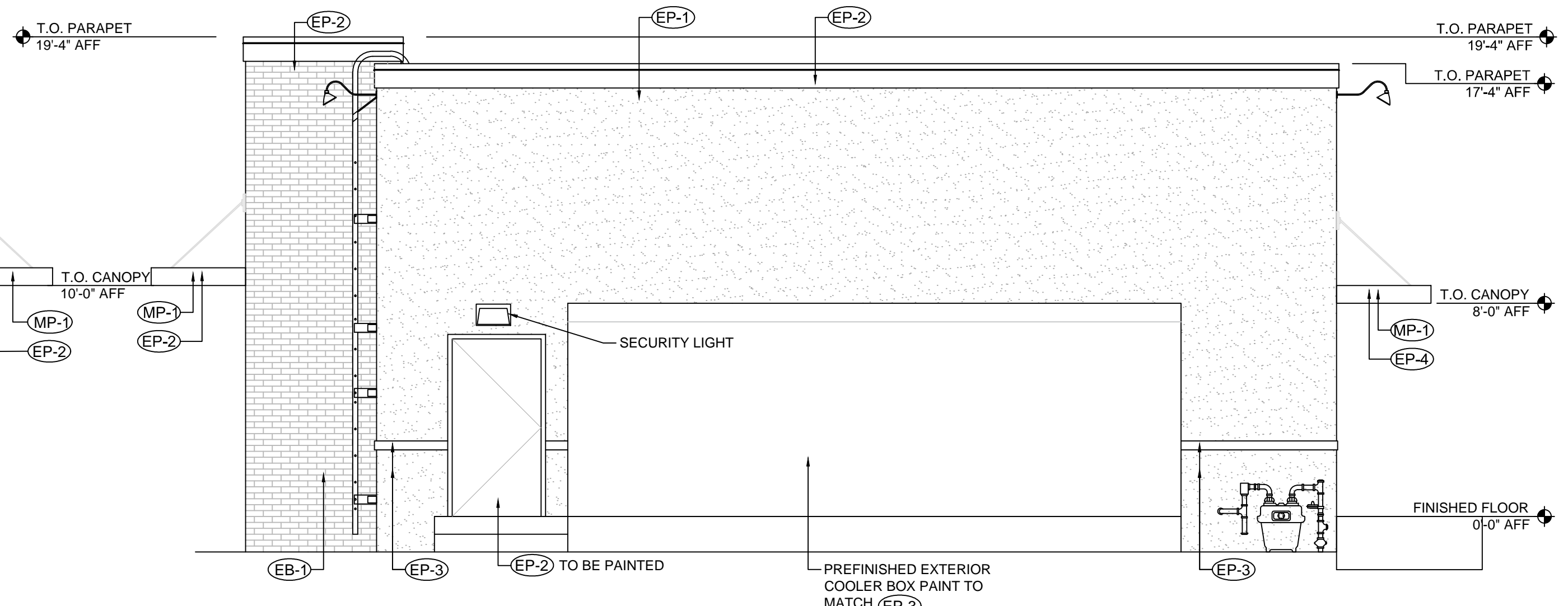
Revisions

2021-08-10	REVISED ELEVATIONS
▲	
▲	
▲	
▲	
▲	

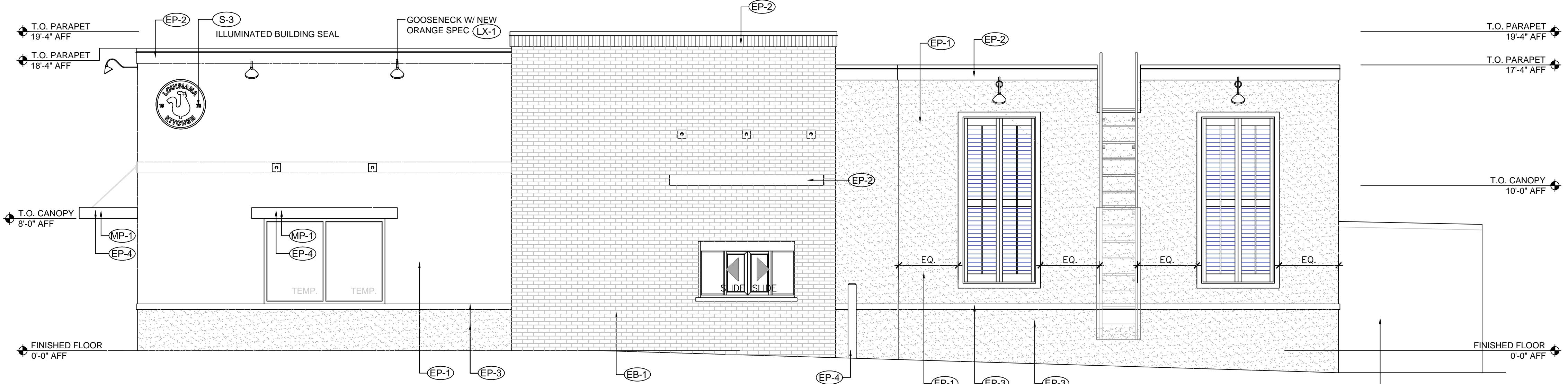
Drawn By RG Checked By  
Scale 1/4" = 1'-0" Date 2020-10-30  
Job No. 20-0026  
Sheet No. PFP-E



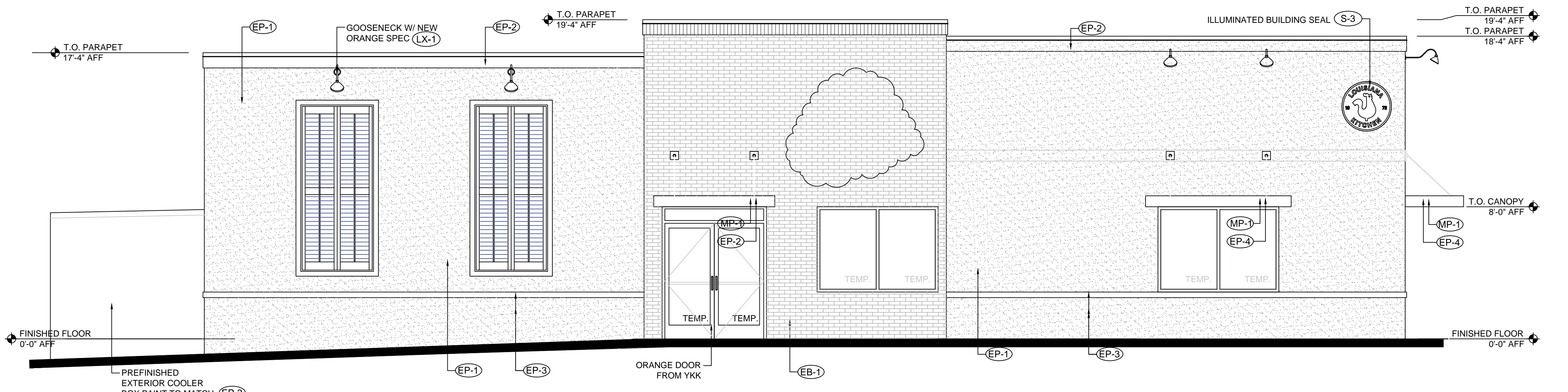
1 FRONT ELEVATION  
A5 1/4"=1'-0"



2 REAR ELEVATION  
A5 1/4"=1'-0"

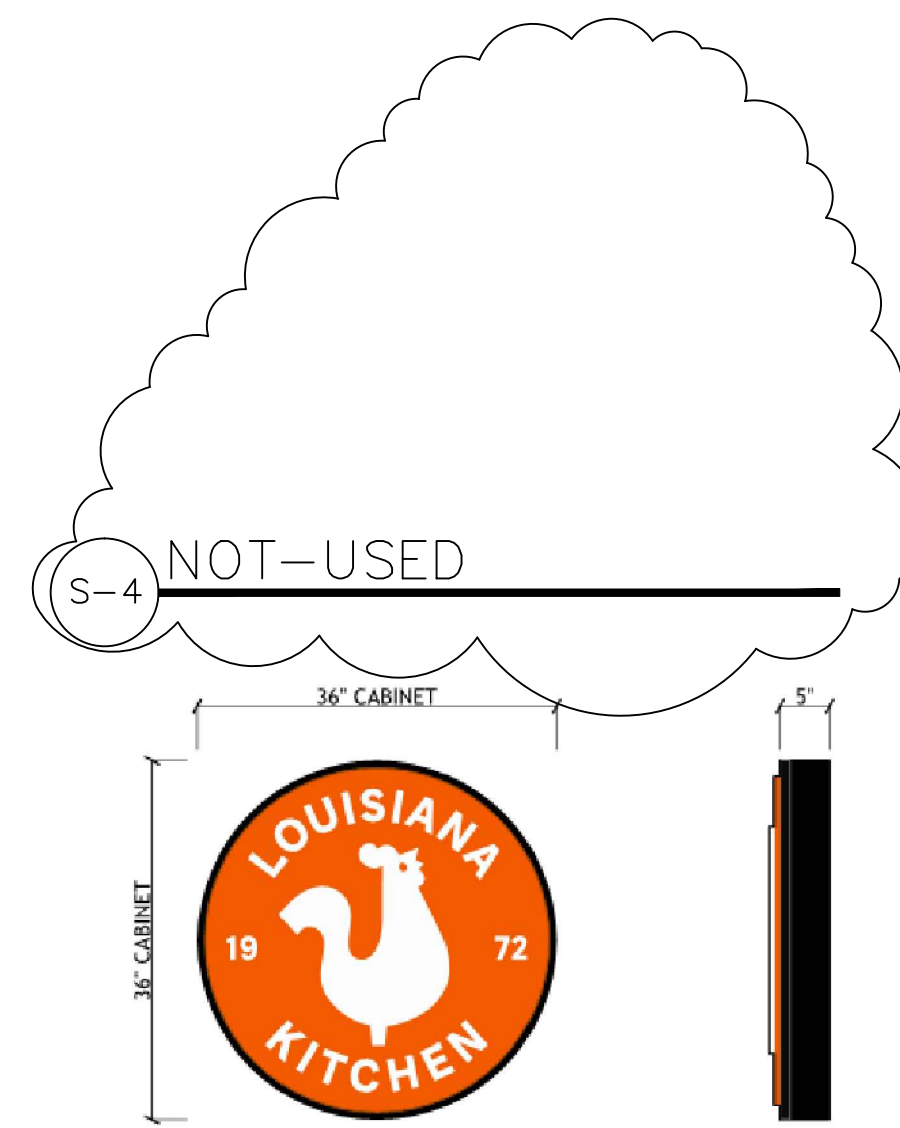


3 RIGHT ELEVATION  
A5 1/4"=1'-0"



4 RIGHT ELEVATION  
A5 1/4"=1'-0"

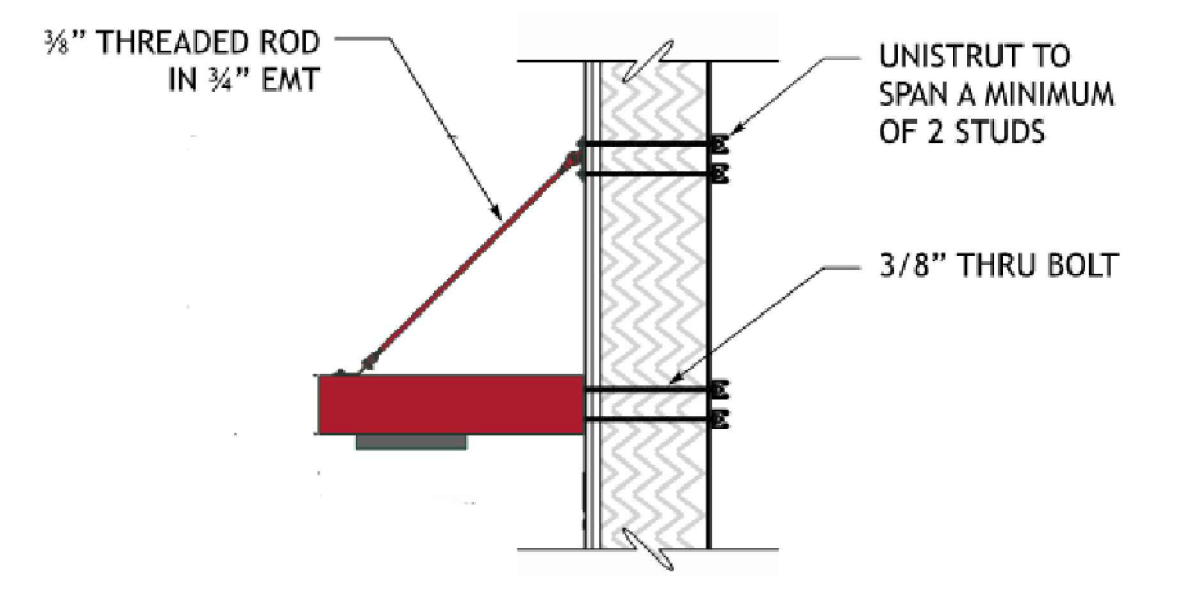
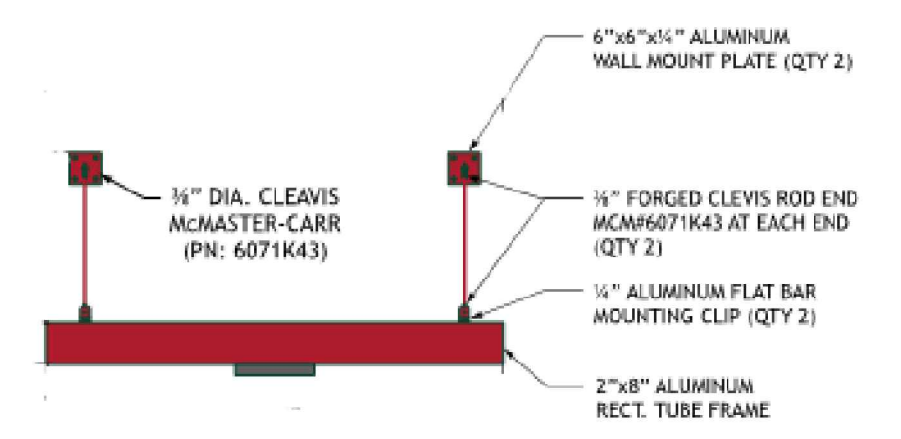
CODE	MATERIAL	LOCATION	DESCRIPTION
EP-1	EXTERIOR PAINT	MAIN WALL ABOVE WAINSCOT TRIM	"WHITE" OC-125 Moonlight White
EP-2	EXTERIOR PAINT	PARAPET TRIM	"BLACK" 2120-20 Black Iron
EP-3	EXTERIOR PAINT	MAIN WALL BELOW WAINSCOT TRIM	"GRAY" HC-170 Stonington Gray
EP-4	EXTERIOR PAINT	BOLLARDS, PYLON & DIRECTIONAL SIGN POLES	"RED" 2086-10 Exotic Red
EP-5	EXTERIOR PAINT	DRIVE THRU WINDOW CANOPY	PRE-FINISHED BLACK
EF-1	WOODEN SIDING		CEDAR - Vintage Wood
EB-1	BRICK		FLAGSTAFF



S-4 NOT-USED  
S-3 ILLUMINATED BUILDING SEAL  
FRONT VIEW & SIDE VIEW



S-1 ILLUMINATED CHANNEL LETTERS  
FRONT VIEW & SIDE VIEW



MP-1 CANOPY  
FRONT VIEW & SIDE VIEW